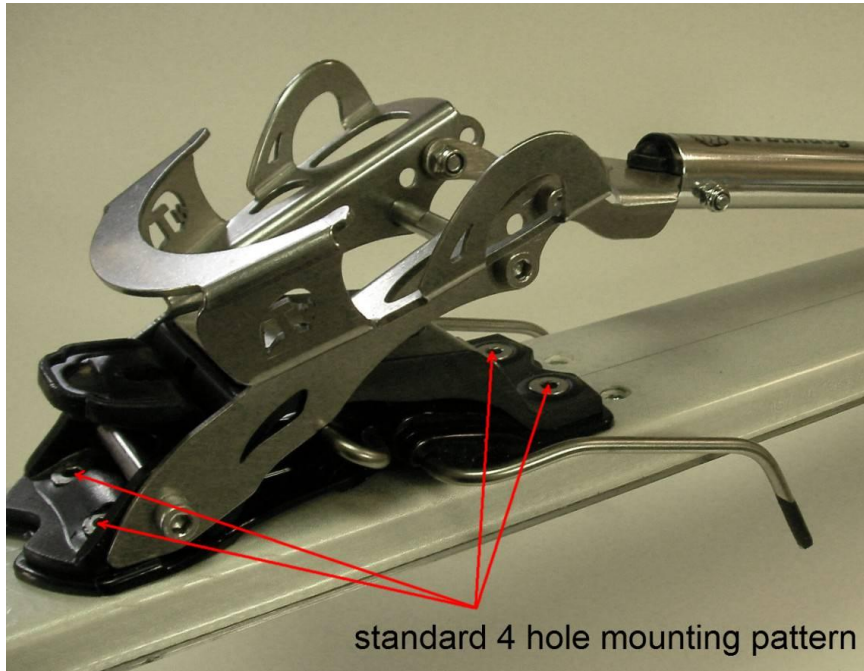


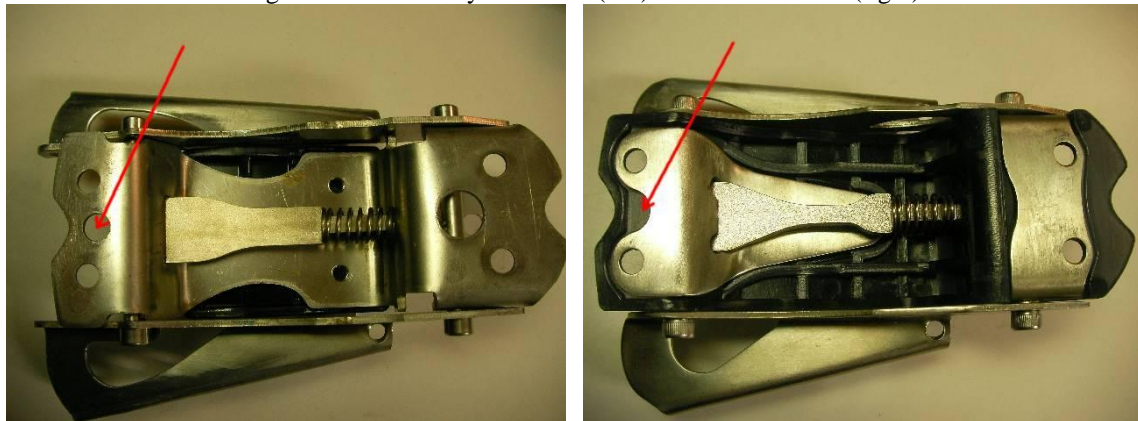
These instructions describing the use of a 5th mounting hole in a Telebulldog binding.

The Telebulldog binding has a standard 4 hole mounting pattern. It's the same mounting pattern a G3 Targa and Black Diamond O1 bindings. An optional 5th mounting screw can be added in the rear of the binding. I recommend adding a fifth mounting screw in the following circumstances:

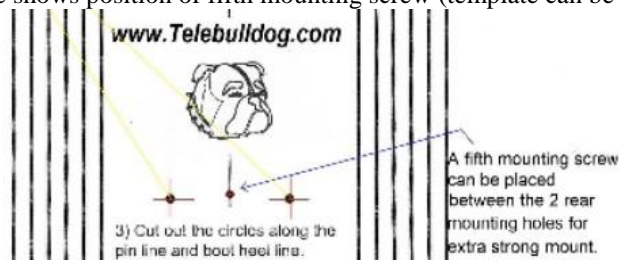
- 1) Larger boot sizes such as men's 28, 29 or 30.
- 2) Heavier, aggressive skier.
- 3) Heavy load springs installed in the heel of the binding.
- 4) Binding is being mounted in existing holes (except metal inserts).
- 5) Mounting binding into a ski with a weak top sheet and/or weak core.



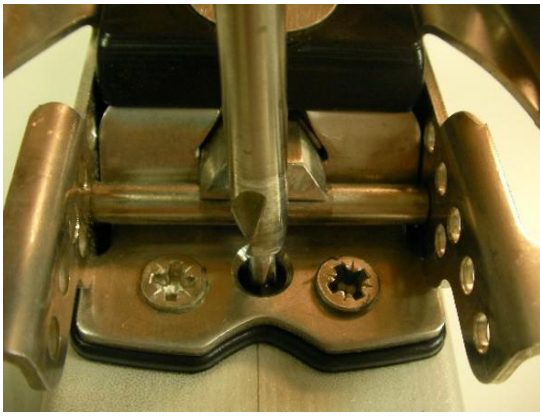
Position of fifth mounting screw for unibody steel base (left) and standard base (right).



Mounting template shows position of fifth mounting screw (template can be printed from web site).



To add 5th mounting screw, first mount binding with 4 screws as you would normally, then drill and add 5th screw as directed below.



UNIBODY STEEL BASE: Drill through the center hole in the rear of the binding. You will be drilling through the plastic brake plate into the ski. Place a regular mounting screw into the hole.



STANDARD BASE: Drill hole through plastic base 5/16" from edge of plastic. The hole should be drilled adjacent to the metal in the base as shown above.



Drive shoulder screw through plastic into ski as pictured above.