

Adjusting NTN toe box to your NTN boot.



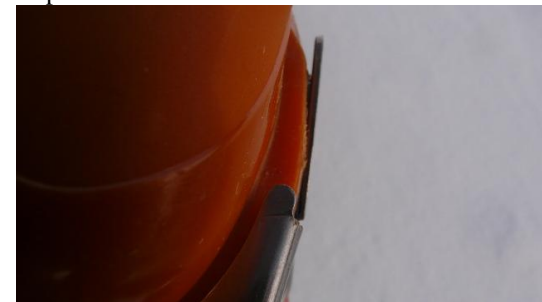
Proper fit above... the front of the toe box should be snug against the front crossbar (within 1/8 in )



The NTN toe box is designed with adjustable side wings.



Use a screwdriver to bend the wings in or out to adjust to the width of your boot. Start by checking to see if the front of the boot is well seated. If there is too much space in the front of the boot then bend the wings out slightly until you get the front of the boot to seat properly. Once this is accomplished, you can bend the sides in until you see the sides have a snug fit, and pictured below.



Once you step into the binding, rock your foot side to side and you should have no lateral movement.